



Introducing Healix Health's Precision Cancer Service, in partnership with Further

Cancer is a growing workplace challenge and cost.

Cancer diagnoses are rising rapidly, impacting employees and driving some of the highest claims costs for employers.

1 in 2

people in the UK will get cancer in their lifetime.

(Cancer Research UK, 2023)

80%

increase in cancer in under 50s globally.

(BMJ Oncology, 2024)

30%

of private healthcare claims today are for cancer vs 1% twenty years ago.

(Cover Magazine, 2022)

£133bn

cost to the UK economy a year in lost productivity.

(Cancer Research, 2025)

Early intervention and precision medicine can shorten treatment time, reduce time off work, improve survival and protect against high-cost claims.

So we've partnered with Further, specialists in designing and delivering ground-breaking solutions in complex areas of healthcare, to bring you our Precision Cancer Service.

Pinpointing the right cancer treatment is key.

Precision Medicine is a new era of oncology medicine that analyses the genomic make-up of each individual cancer to personalise cancer treatment plans to each patient, moving away from the "one-size fits all" approach.

Our new Precision Cancer Service, in partnership with Further, uses advanced genomic testing and global oncology expertise to match each cancer patient with the treatments most likely to work for them.

While early-stage cancers are generally well served by traditional treatment pathways, this new service is designed to add value where it matters most; focusing on advanced cancers, rare cancers, cancers of unknown primary and those that fail first-line treatment, for patients who have the greatest unmet need.

The benefits of precision medicine



More precise diagnosis

Avoids up to 38% of misdiagnosis leading to death or serious permanent disability



Personalised treatments to target specific mutations

50% of patients respond to precision medicine, even with heavily pretreated disease



Optimisation of resources

35% cost reduction while improving survival rates



Faster recovery, better quality of life

X1.9 progression free survival for patients with advanced cancer, without increased costs

Introducing our Precision Cancer Service

This is a highly personalised cancer service, placing members at the centre, ensuring they are informed of their options and empowering them to take an active role in their cancer care:

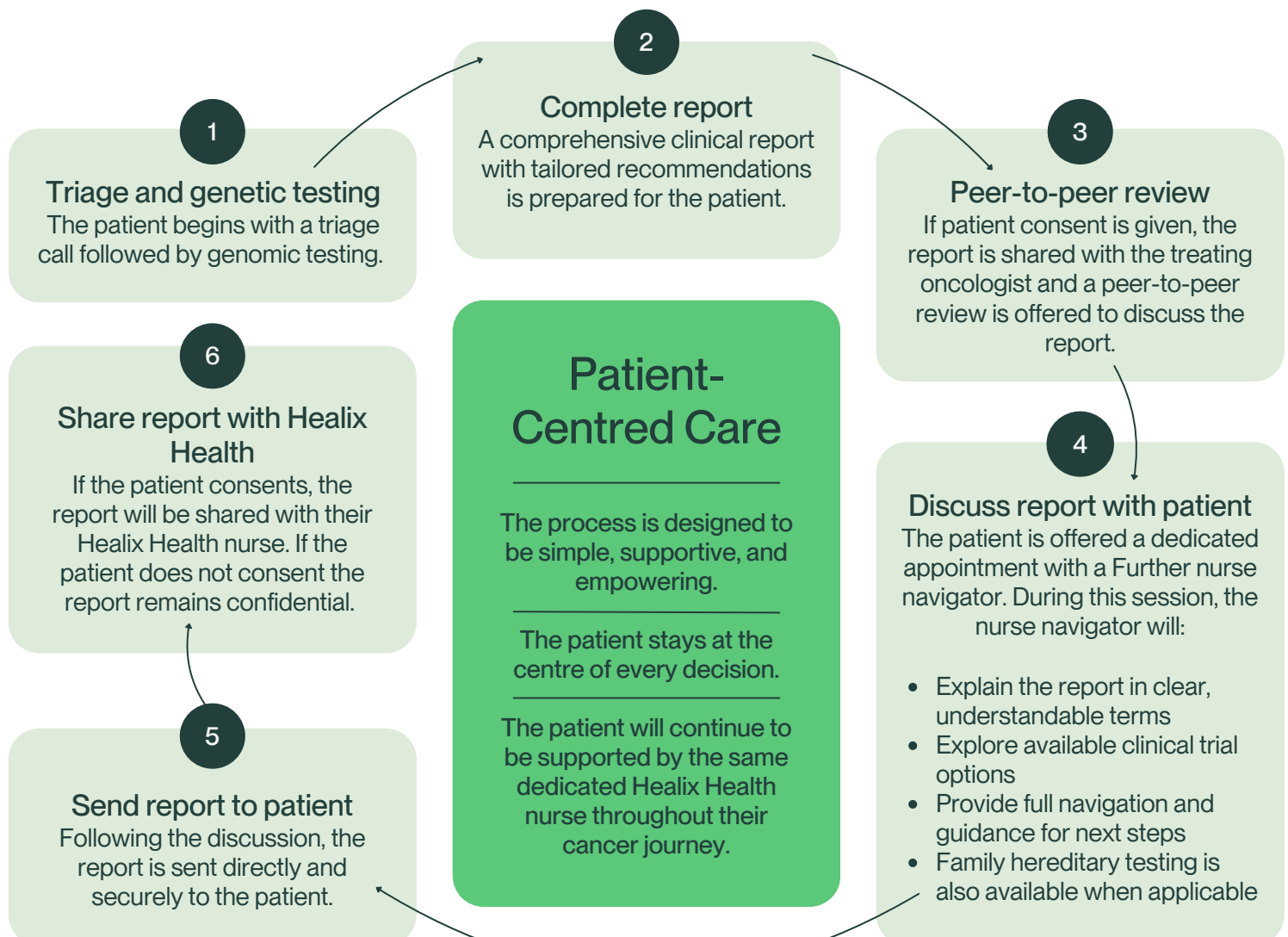
Watch the video for more info:

- ✓ Personalised treatment plan
- ✓ Comprehensive genomic testing panels
- ✓ Access to renowned international medical experts
- ✓ Family genetic testing with counselling



- ✓ Support for the member's medical team with peer-to-peer reviews
- ✓ Assisting with access to clinical trials
- ✓ Dedicated expert navigation & support for the member and their family

How does our Precision Cancer Service work?



Depending on patient and treating oncologist availability, to avoid delays, we may on occasion provide the patient report ahead of the peer-to-peer review and patient discussion.

Case study

This case demonstrates the difference a precision-led approach could make—not only improving a patient's health and quality of life but also reducing unnecessary costs for schemes.



Challenge

A member spent three years following a standard treatment pathway without early genomic or molecular testing. As a result, they received therapies that were never going to be effective for their tumour type. The outcome was limited clinical response, repeated hospital admissions, complications, and a prolonged treatment journey that significantly increased costs.



What We Found

On review, had genomic testing been carried out early, it would have pointed to a targeted therapy and identified clinical trial opportunities right from the start. Instead, these were only explored after three years of ineffective treatment, by which time the member had already endured unnecessary procedures and the scheme had absorbed substantial costs.



The Impact

A precision-led approach could have improved:

- **Employee wellbeing:** By avoiding ineffective therapies and repeated hospital admissions, the employee could have experienced fewer treatment-related side effects and maintained a better quality of life during care.
- **Employee productivity:** A faster route to clinical stability could have supported improved productivity, with less absenteeism and presenteeism linked to prolonged illness.
- **Employee engagement:** The employee could have felt more supported with access to advanced care, which may have strengthened engagement, loyalty and morale in the workplace.
- **Speed of return to work:** Earlier access to the right treatment pathway could have reduced the time the employee was unwell and enabled a quicker return to work.
- **Cost:** Avoiding unnecessary interventions and multiple hospital stays could have saved over £340,000—a clear example of how personalising care can benefit both members and clients.



Conclusion

This case underlines why genomic testing should be considered early in the cancer pathway. It's not just about saving money—it's about ensuring patients receive the right treatment, at the right time, giving them the best possible chance from the start.

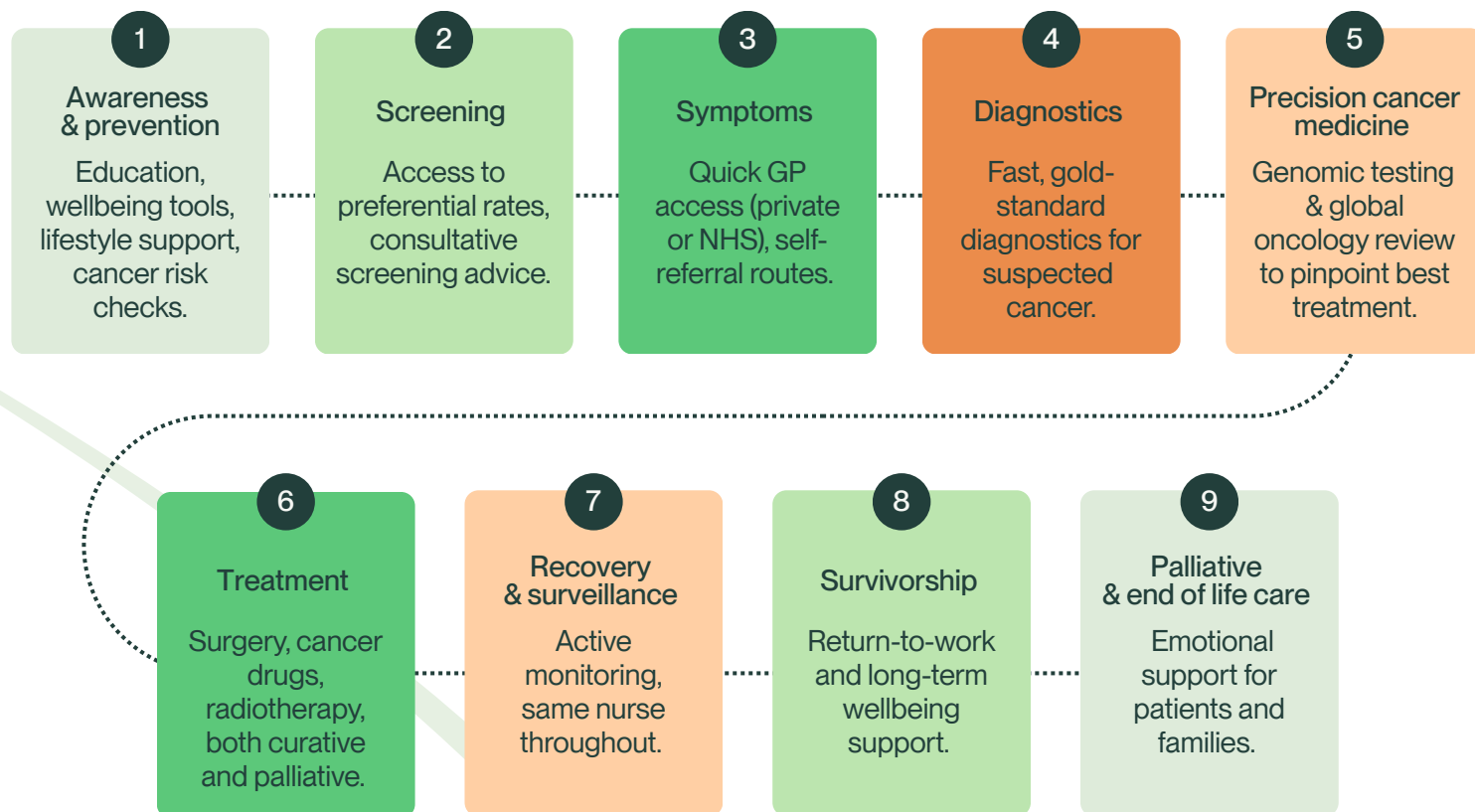
What does this mean for your business?

For a fixed fee per annum, which includes spouse and dependants, your people will benefit from superior cancer care that delivers:

- ✓ **Faster answers, better outcomes** – giving your people the right treatment first time, and speeding up their return to work.
- ✓ **Seamless clinical integration** – Healix Health and the Further team work as one, ensuring smooth transitions and joined-up care.
- ✓ **Nurse-led guidance** – every member has a dedicated Healix Health nurse from diagnosis through to treatment and recovery, supporting them throughout.
- ✓ **Cost control** – avoiding costly treatments that won't work or may cause harm.

The Healix Health cancer pathway

We can provide your people with expert, nurse-led support from prevention to palliative care – now with precision cancer medicine for faster, more effective treatment.



Find out more

To book a more detailed session on how this service can add value to your scheme, please get in touch with your usual Healix Health contact or email us at AccountManagement@healix.com

You can also find our FAQs here: [Precision Cancer Service](#)

In partnership with Further

Founded in 2012, Further specialises in providing innovative healthcare solutions for complex and serious illnesses like Cancer, Neurosurgery, Cardiology, and Transplants.

Its extensive experience in treating cancer, combined with access to top-tier laboratories and an international network of cancer experts, allows Further to help ensure every patient is matched with the treatment most likely to work for them. Through genomic testing, molecular tumor boards, and expert navigation, Further expands treatment options—from targeted therapies to clinical trials—while providing clarity and confidence to treating oncologists.

You can find out more about Further here: wegofurther.com/who-we-are/